

# Infant Mortality and Low Birth Weight

**Impact Score**  
0 **20-22** 30

Infant mortality is the death of an infant that occurs during the first 365 days of life. An Infant Mortality Rate (IMR) is the number of babies who died in their first year of life per 1,000 live births. Note: Low birth weight (LBW) is defined as a birth weight less than 2,500 grams, or 5.5 lbs. Source: CDC

## Health Impacts

Increased risk of:

- Cardiovascular diseases
- Respiratory problems
- Infections
- Delayed motor and social development
- Learning disabilities

Source: CDC, County Health Rankings

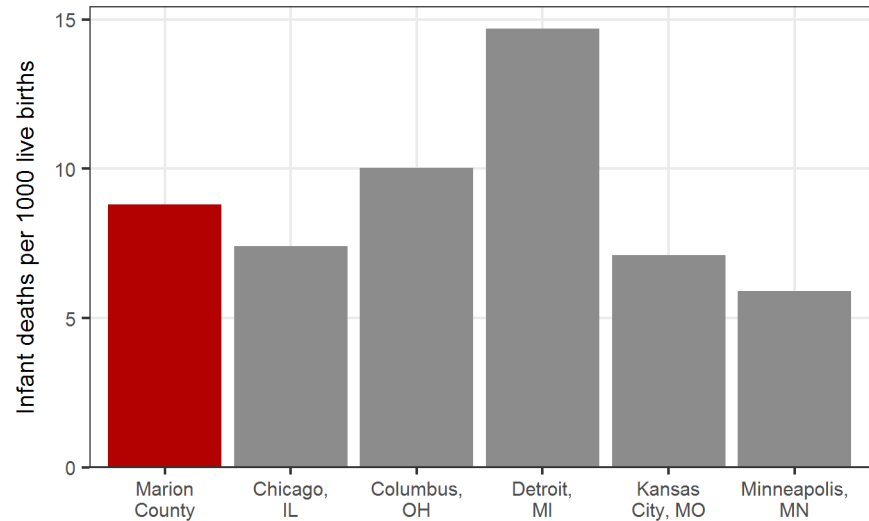
## Treatment

- Quit smoking
- See a doctor for a medical checkup before pregnancy
- Control diseases such as high blood pressure or diabetes
- Get preconception health care and early prenatal care
- Discuss concerns during pregnancy with a doctor
- Seek medical attention for any warning signs or symptoms of preterm labor
- Daily multivitamin containing 400 micrograms of folic acid before and throughout pregnancy

Source: CDC

## Comparison

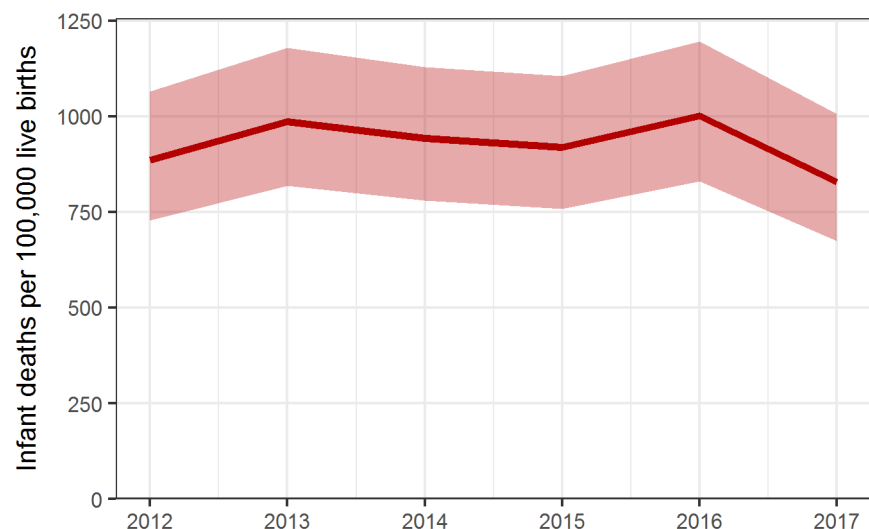
**Infant Mortality Rate, Marion Co. vs. other locations, 2012**



Source: Big Cities Health Coalition

## Trend

**Marion Co. Infant Mortality Rate, 2012-2017**



Source: Marion County Death and Birth Certificates, DR3728

## Risk Factors

### Infant Mortality Risk factors

- Preterm birth
- Birth defects
- Low birth weight
- Maternal complications during pregnancy
- Unsafe sleeping practices

Source: HHS, CDC

### Low Birth Weight Risk Factors

- Smoking and alcohol consumption
- Lack of weight gain
- Being under 15 years or over 35 years old
- Previous preterm birth
- Exposure to air pollution
- Drinking water contaminated with lead
- Low educational level or income
- Stress
- Domestic violence or abuse
- Being unmarried

Source: HHS, CDC

## Equity

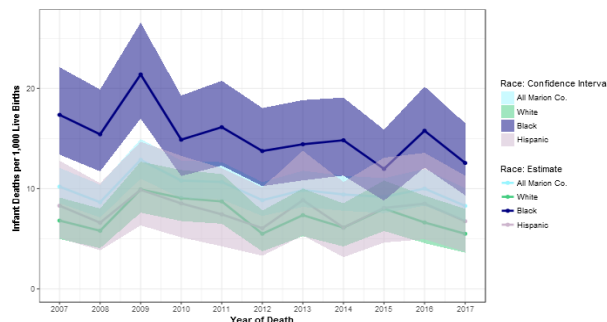
### Infant Mortality Rate by Race/Ethnicity, 2017

Infant deaths per 1,000 Live births:

- All Marion County 8.3
- White, non-Hispanic 5.5
- Black, non-Hispanic 12.6
- Hispanic 6.8

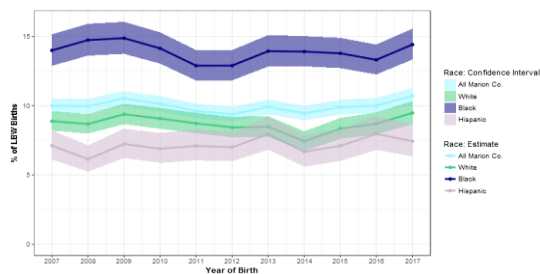
Source: Marion County Death and Birth Certificates, DR3484

### Infant Mortality Rate by Race/Ethnicity, Marion Co. 2007-2017



Source: Marion County Death and Birth Certificates, DR3484

### Low Birth Weight by Race/Ethnicity, Marion Co. 2007-2017



Source: Marion County Death and Birth Certificates, DR3484

### Low Birth Weight by Race/Ethnicity, 2017

Percent of low birth weights:

- All Marion County 10.70%
- White, non-Hispanic 9.50%
- Black, non-Hispanic 14.40%
- Hispanic 7.40%

Source: Marion County Death and Birth Certificates, DR3484